

# SMART WaSH solutions in times of Corona

## Part 1

# SMART Centre Group

# MetaMeta

Webinar May 6th, 2020

Reinier Veldman  
rveldman@metameta.nl



# MetaMeta

- Social Enterprise in The Netherlands
- 20+ employees
- Offices in Ethiopia, Kenya, Pakistan, Turkey, Nepal and Yemen
- Activities & themes:
  - TheWaterChannel
  - Rodent control
  - Green Roads for Water
  - 3R
  - Sponge cities
- Coordinator of the SMART Centre Group



# Water related challenges

- 1. To Reach SDG6.** Also in remote, small rural communities where machine drilled wells, imported pumps are too expensive.
- 2. To contribute to water related SDGs like:**  
SDG1 (Poverty),  
SDG2 (Food) and  
SDG8 (Employment)

# The Context – Rural & Peri-urban

- 70% of the unserved (the “last mile”) in rural areas
- Remote, dispersed, small, nomads communities
- 35% of communal rural water systems not functioning
- Imported technologies → lack of \$ for investment, spares.
- > 40% of users contribute to maintenance ?
- Per capita funds for rural water supply less than urban ?
- Donor dependence
- Potential of self-supply (household investment) overlooked



# A solution: the SMART approach

**Simple, Market-based, Affordable, Repairable, Technologies and Innovative approaches**

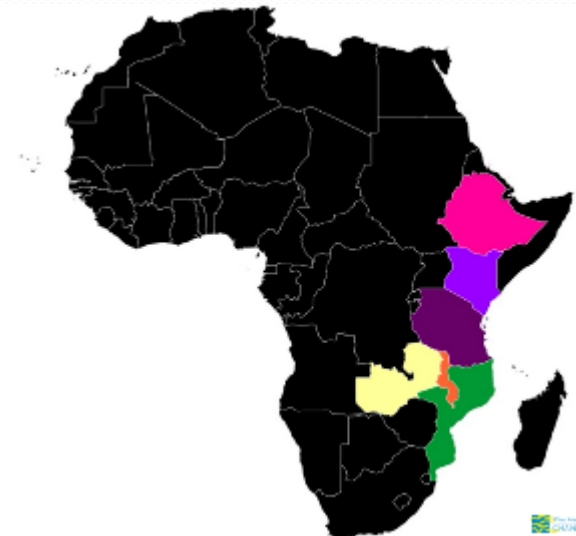
## **Focus on:**

- 1. Cost reduction.** Local production, innovation
- 2. Productive use.** Family systems, farm wells
- 3. Household Water Treatment.** HWTS
- 4. Building supply chains, business development.**  
Training local private sector via SMART Centres, Vocational education,..



# SMART Centres

- Trainings Centres, business incubators for companies, mainly WaSH-related
- Started in 2008
- Train welders, drillers, masons in technical skills
- Train, coach companies in business skills
- Introduce innovative, affordable technologies
- Build supply chains of affordable options



# Example SMART Centre Malawi



# Effect SMART Centre Malawi

Mr. Mzumala in Mzuzu

- 8 years ago he had a bike and dug wells by hand
- Now he has a car and 3 drilling teams





# Innovative approaches

- **Focus on Self supply**

Families investing themselves

- **Family Based Management**

Family owned = community served, example Zambia

- **Well clubs, Farm clubs**

Families drilling their own well. Possible with Mzuzu drill, EMAS drill

- **Faith & Water**

Training faith leaders. They reach remote communities



*Donor dependent step*

Larger contractors

# Water ladder for Households / self supply

Local artisans



*End user affordable steps*

# Results SMART approach

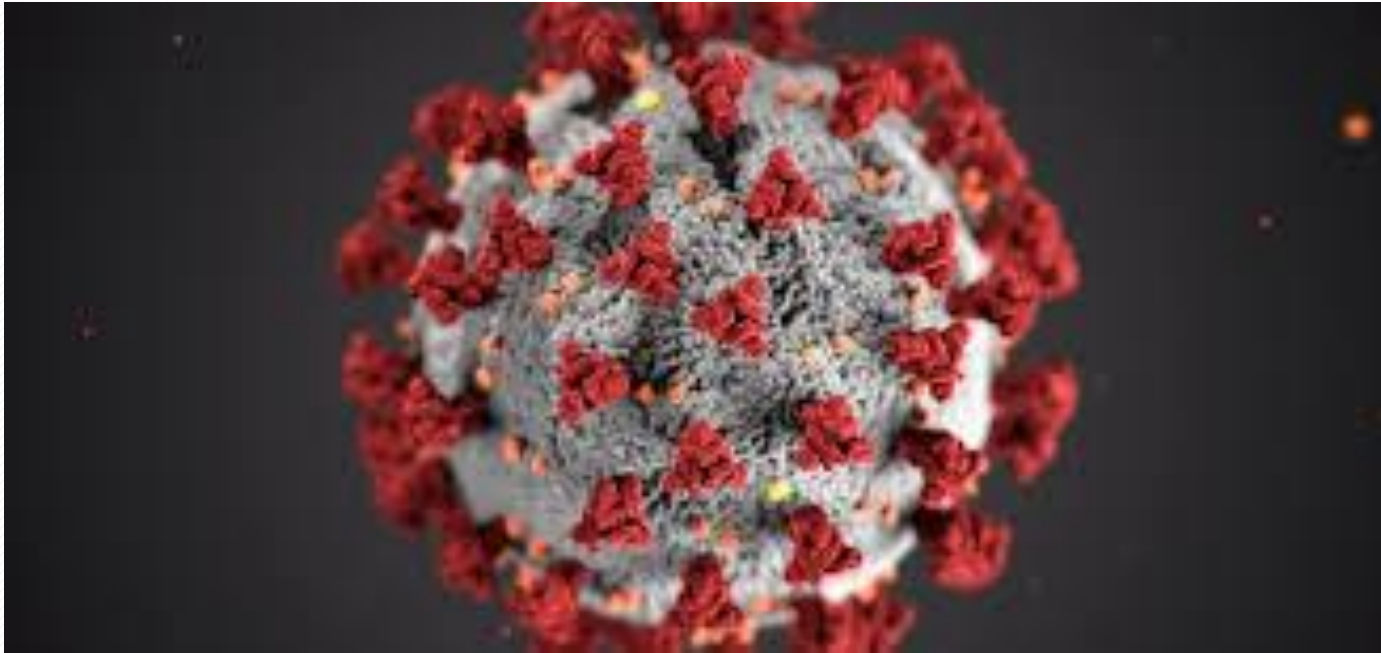
- SMART Centres in Tanzania, Zambia, Malawi, Mozambique
- Starting in Ethiopia, South Sudan, Kenya, Niger, Nicaragua
- > 50 drill and pump companies who go on themselves after the training.
- “Profit based sustainability”
- > 1 million people use SMARTechs
- > 12000 rope pumps installed, 60% paid by families (self supply)
- High pump functionality



# Impact SMART approach

- **Reach part of the SDG6 target group.**  
Manual drilling reaches areas where machines cannot enter or are too expensive
- **Contribute to SDG1 and SDG2.**  
Family, farm wells = water for productive uses so income and more food security. (SDG2)
- **Increased health, SDG3.**  
More and better quality water nearer the house
- **Creation of Employment, SDG8**  
In production of wells, pumps,... Water for life stock, irrigation,...



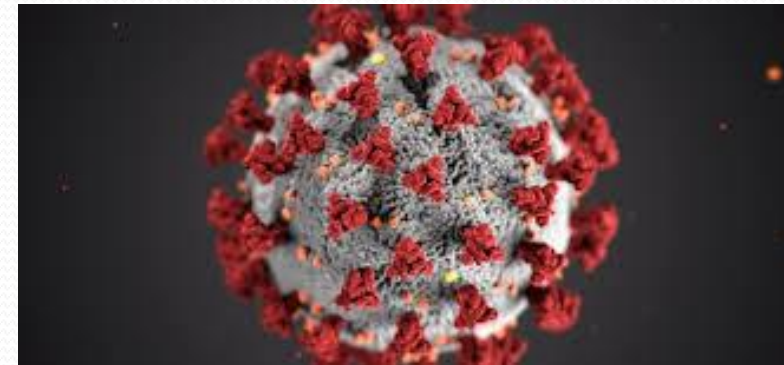


# Effects of the Corona crises

- Lockdown in many countries:
  - Fewer movements & closed markets → reduced business
  - Access to water needed for personal hygiene
  - Community pumps, spreading of virus?
  - People unable to work on field → food shortage
    - Increase in prices of essentials
  - No income from piece work
  - Reduced funding for the sector in the long term?

But: Never waste a crises!!

Use Corona funds for capacity building!!



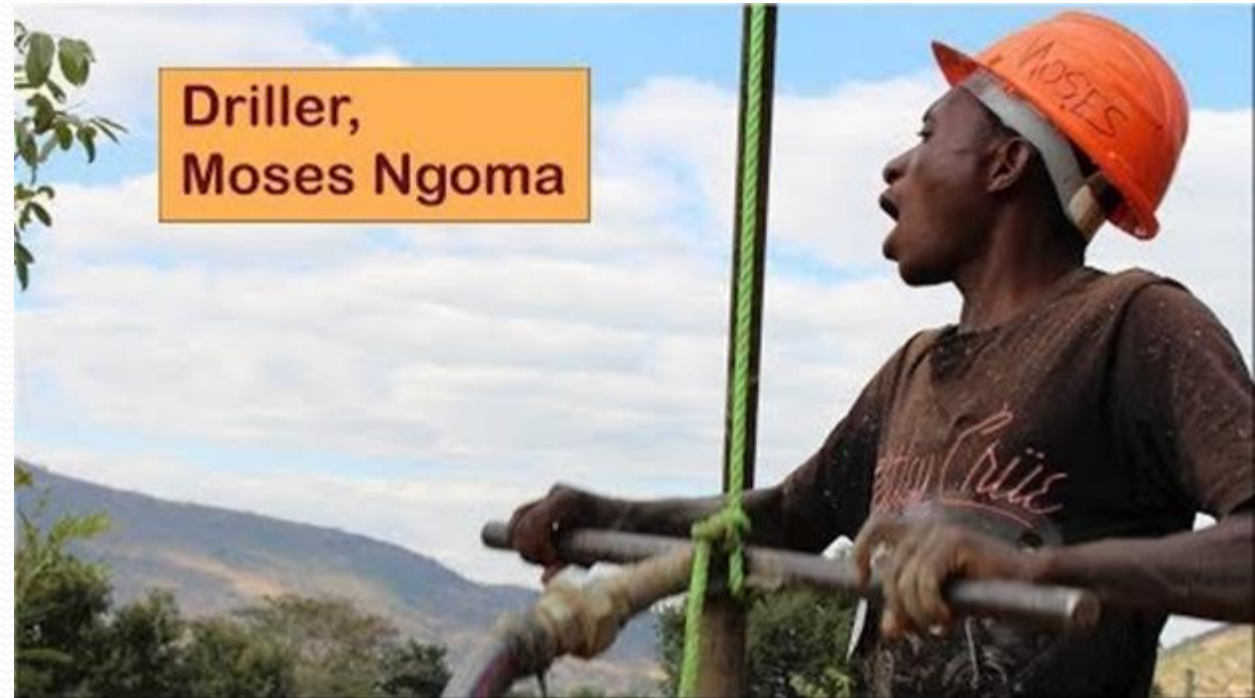
# What response is needed?

- Access to Water & Hygiene
- Food security
- Stable income
- Employment
- Local solutions – no imports

# What can SMART Centres do for you?

Trained entrepreneurs can:

- Drill wells
  - Produce, install, repair pumps
  - Produce washbuckets, washstations
  - Train in Tippy Tap, Dip Tap etc.
  - Etc.
- 
- Available as we speak
  - No imports needed
  - SMART Centre for monitoring/guidance/quality control





# Example: Jacana SMART Centre, Zambia

- Drilling wells at 20 Health centres
- Handwash buckets in public places
- Frame made by local welder  
→ Employment
- Produce liquid soap from soap bars  
→ Employment and locally available
- Promotion for local businesses



# Example: Household gardens

- Income
- Nutrition
- Resilient households



# Developments

- Started cooperation with EMAS.  
Expand technologies; EMAS drill to 60m. Pumps, Underground tanks
- Cooperation with CAWST  
WET Centres in Zambia and Ethiopia
- Assessment of SMART approach by DGIS
- Updates of manuals, brochures.



# Brochure Smart Hygiene Solutions

- Affordable options, focus on households
- Most can be produced with local materials
- Includes game on Hygiene. Reaching parents through children

[www.smartcentregroup.com](http://www.smartcentregroup.com)



# Thank you

Reinier Veldman [rveldman@metameta.nl](mailto:rveldman@metameta.nl)

Check: [www.smartcentregroup.com](http://www.smartcentregroup.com) for:

- Brochure on Smart Hygiene Solutions
- SMARTech catalogue, Manuals, Videos, Activities
- Papers/presentations
- Monitoring results

